

LEGEND

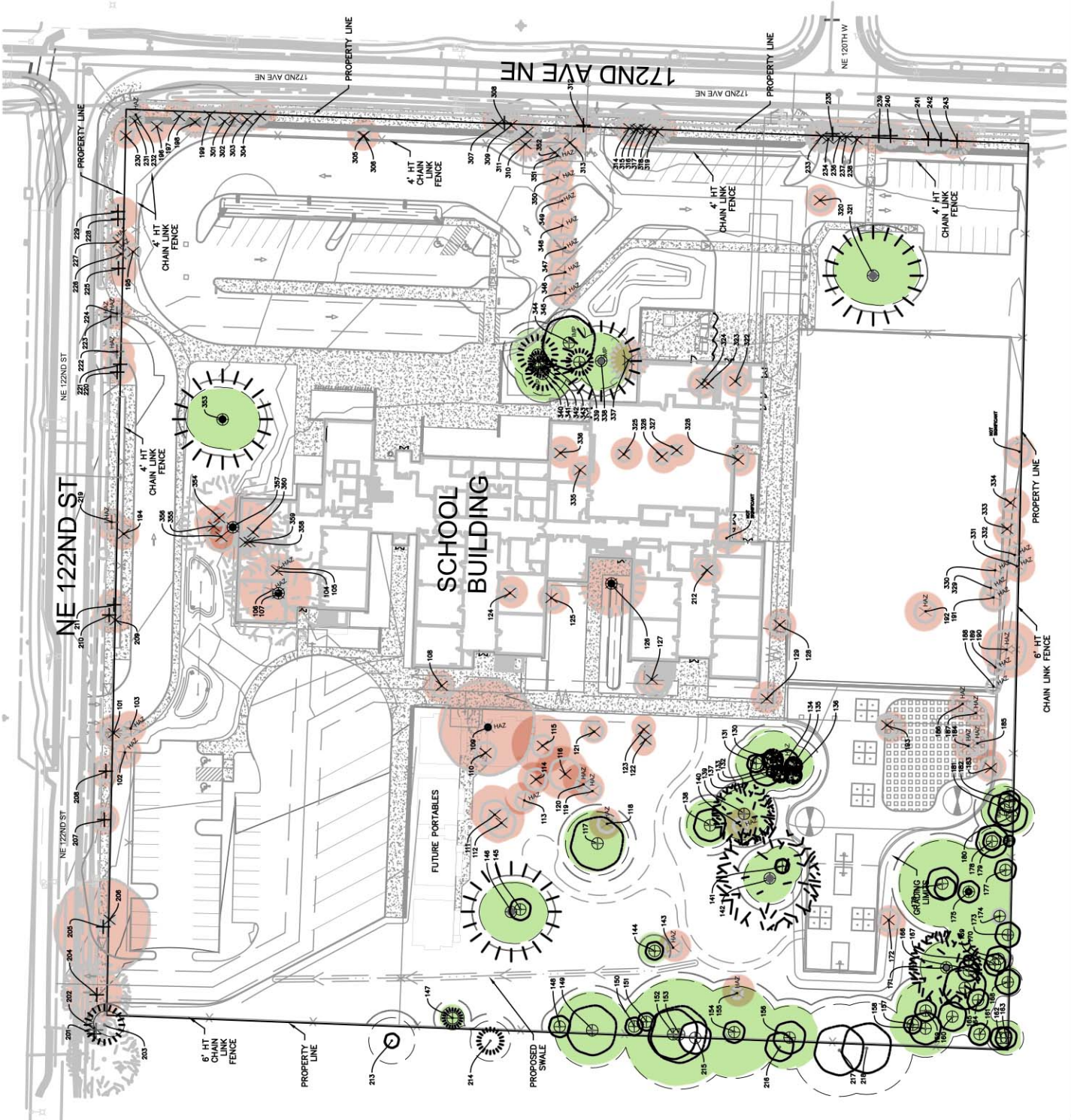
SYMBOL	QTY	DESCRIPTION
	7	ON-SITE LANDMARK TREE RETAINED WITHOUT IMPACT
	1	ON-SITE LANDMARK TREE RETAINED WITH IMPACT
	43	ON-SITE SIGNIFICANT TREE RETAINED WITHOUT IMPACT
	5	ON-SITE SIGNIFICANT TREE RETAINED WITH IMPACT
	76	ON-SITE SIGNIFICANT TREE TO BE REMOVED
	3	ON-SITE LANDMARK TREE TO BE REMOVED
	20	R.O.W. TREE TO BE REMOVED
	33	ON-SITE HAZARDOUS TREE TO BE REMOVED
	7	R.O.W. HAZARDOUS TREE TO BE REMOVED
		DRIP LINE PER ARBORIST REPORT
		TREE PROTECTION FENCE (5' OUTSIDE DRIPLINE)
		PROPERTY LINE
		LANDMARK TREE

TREE PRESERVATION SUMMARY TABLE

TREE TYPE	REMOVED/%	IMPACTED/%	RETAINED/%	TOTALS
LANDMARK (>30" DBH)	3 (27%)	1 (8%)	7 (64%)	11 (100%)
SIGNIFICANT (6"-30" DBH)	76 (61%)	5 (4%)	43 (35%)	124 (100%)
TOTALS	79 (59%)	6 (4%)	50 (37%)	135 (100%)
SIGNIFICANT TREE REPLACEMENT	76 (1:1 RATIO)	5 (1:1 RATIO)	N/A	81 (1:1 RATIO)
LANDMARK TREE REPLACEMENT	9 (3:1 RATIO)	3 (3:1 RATIO)	N/A	12 (3:1 RATIO)
TOTAL TREE REPLACEMENT	85	8	N/A	93 TOTAL

NOTES

- THERE IS A COMBINED TOTAL OF 168 LANDMARK AND SIGNIFICANT TREES ON-SITE, INCLUDING 33 HAZARDOUS TREES ON-SITE.
- SIGNIFICANT TREES REMOVED SHALL BE REPLACED AT A RATIO OF 1:1.
- LANDMARK TREES REMOVED SHALL BE REPLACED AT A RATIO OF 3:1.
- MINIMUM SIZES FOR REPLACEMENT TREES SHALL BE 2.5-INCHES CALIPER FOR DECIDUOUS TREES AND 6-FEET HT. FOR EVERGREEN TREES.
- TREE PRESERVATION PLAN IS BASED ON THE ARBORIST REPORT PREPARED BY AMERICAN FOREST MANAGEMENT, DATED 12/17/2015, UPDATED 10/14/2016.



**NEW ELEMENTARY IN NORTH REDMOND  
PUBLIC NOTICE TREE PRESERVATION PLAN**